

SAVE AS AND SEND OPTION CONTROL UTILITY



Ensure data security and avoid local backup of parts information by disabling the Save as and Send options in Creo while connected to Windchill.
Once disconnected, both the Save as and Send options are enabled again.

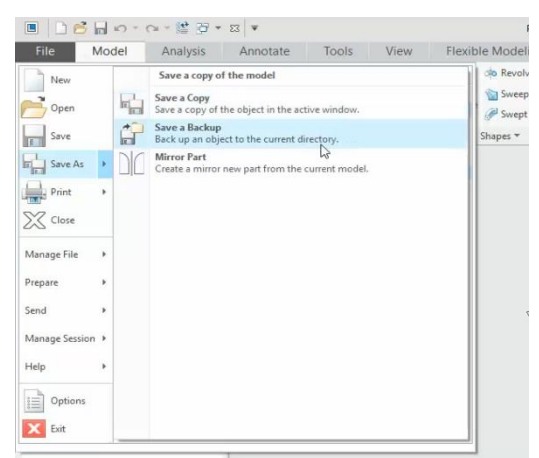
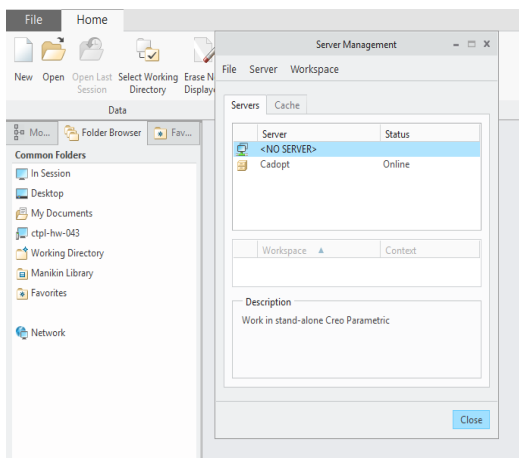
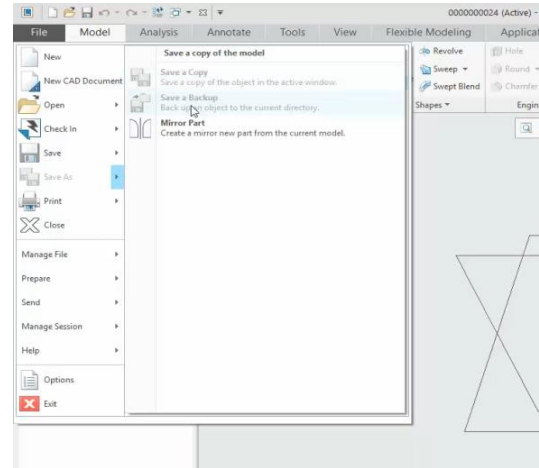
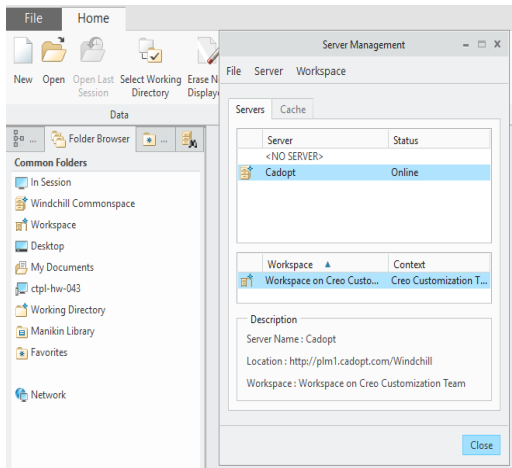
Compatible with Creo, SolidWorks and Inventor



Save as and Send Option control utility

Application Overview / Market Segment Introduction:

Save as and Send Option control utility is working Creo (Pro/ENGINEER). This application restrict save as and send option in the file menu option, when the Creo connected with windchill server. If the server is disconnected save as and send option is get enabled. Main intension of this application to stop the multi backup in local server & data security of windchill parts.



Current Scenario (Without Application):

User need to Manually:

- Organization can't able to restrict save as backup and send option in Creo.

Negative consequences:

- User can save and send the file to anyone.
- Multi backup in local server.

Positive Business Outcome:

Standardization – Standardization of Process as per company standards.

Quality output:

- **Error Free** – Eliminates unwanted multi backup in local server.

How it adds value:

- Works with PTC Creo (Pro/ ENGINEER) Basic Licenses.
- Application will launch automatically when Creo open.
- Application automatically restricts save as backup and send option when Creo connected with windchill server.
- If user working in local, it enables save as backup and send option.

List of satisfied users:

- Havells.

For more information please contact:

Sylvie Loos
Head of Services
Telephone: +49 8441 8596 342
Email: sylvie.loos@arsandis.com

